

nst the **experience** shows

Psychology & Sociology Experiences

2012/13



There's no substitute for being there. That's why, since 1967, we've been helping to create tours which educate, inspire and enable children to develop a sense of independence.

If you want to deliver the most effective learning outside the classroom experience for your group, choose NST. For 45 years, our expertly planned tours have supported teachers in getting the very most out of their time away.





What You Can Expect in 2012/13

The Tavistock Centre, London Only available with NST

This world-renowned specialist provider of mental healthcare offers a fascinating opportunity to see psychology in action. Available only with NST, your students will be able to speak to a range of psychologists and hear about the different pathways into clinical psychology as a profession. To find out more about this thought-provoking visit, see page 13.

New destination – New York New for 2012/13

This exciting destination offers a fantastic selection of educational visits that link directly with key study themes. With a combination of excellent immigration and Holocaust-focused visits, plus the opportunity to gain an insight into the tragic events of September 11th 2001, your group will be able to explore a wide range of topics. Turn to page 26 to find out more.

Our Expert Psychology Consultant

We work closely with Psychology consultant, Jenny Toal, to ensure our experiences support what your students are learning in the classroom. Jenny has been a Psychology teacher for many years, she is a former member of a teachers' advisory committee to one of the awarding bodies, an examiner, and former Vice Chair of the Association for the Teaching of Psychology.

Our Expert Guide Lecturers

In Vienna, Krakow and Berlin our highly recommended Guide Lecturers can be included in your itinerary to enhance your tour. With strong teaching backgrounds, these experts will engage students' interest. They will also help you to plan your itinerary and offer a scene-setting talk on your first evening.

Contents

Introduction

Tailor-Made for You _____	4-5
Staying There _____	6-7
Safe in Our Hands _____	8-9
Value All the Way _____	10-11

Krakow _____	22-25
New York _____	26-29
China _____	30-33

Destinations

London _____	12-17
Vienna _____	18-21

Information

Booking Conditions _____	34-35
--------------------------	-------



nstgroup.co.uk

There's now more information than ever before on our website!

Tailor-Made for You

Because we've worked with school groups for 45 years, we understand what goes into planning an educational tour. That's why we can create an expertly planned, tailor-made itinerary which fits your needs precisely.

Expertly Planned Every Time

With NST, you'll get your own dedicated Educational Tour Co-ordinator. They'll use their unrivalled destination knowledge and experience to create an itinerary for you that:

- ✓ meets your learning objectives
- ✓ offers the right balance of activities every day with realistic timings
- ✓ contains everything you need, from pre-arranged visits, to tickets, passes & meals

To get started with your tour planning, simply take a look at the suggested itineraries in this brochure for inspiration - but we'll build yours from scratch to meet your exact needs. What's more, you'll receive your final itinerary a full four weeks before you travel too.

Flexible Transport Options

Executive Coaches

Available from any location in the UK and fitted with seatbelts, toilet facilities, air conditioning, DVD and reclining seats.

Channel Crossings

We can arrange a number of ferry and Eurotunnel crossings. Plus, you can now pre-purchase food vouchers from NST for use in various onboard outlets on a number of ferry crossings - so you won't need to carry cash for food en-route.

Rail

A convenient travel option for small groups, ideal for connections to Eurostar, major airports and travel to many city destinations.

Flights

We can arrange for your group to fly from a range of UK airports and we'll work with you to plan your route at the best value possible. We can also secure your seats on any airline with an initial deposit of only £60pp to Europe or £80pp to long haul destinations. An NST representative will also meet you at your UK departure airport and help you at check-in.

Plus, if you book a coach transfer to take you home, upon landing at your UK airport you'll be met by an NST representative who'll escort you through immigration, baggage claim and customs, then take you to your waiting coach.





Staying There

At NST, we offer the widest choice of group friendly accommodation to suit different ages, budgets and preferences – selected for its value and experience in looking after the needs of school groups. You can now download full accommodation descriptions on our website too.

School-Friendly Accommodation

We understand that every group has different needs, so whether you have a specific location, budget or other preference in mind, it's likely that we've got an accommodation option to suit you.

Popular options include:



Each and every MEININGER property combines the service and comfort of a hotel with the carefree and open-minded style of a hostel. So if you're wanting accommodation in a central location with high quality facilities at affordable prices, then look no further.

Equity Point

New York

NST is pleased to be the first school travel company to be working with Equity Point in New York. This hostel is ideally located at Times Square and is currently undergoing renovations to create bespoke school group accommodation with a range of flexible rooming options, individual student beds and en-suite facilities at a great value price.

NEW! Downloadable Accommodation Descriptions

 nstgroup.co.uk

On our website you'll find details of our most popular accommodation options in each of our school tour destinations.

You can now download full accommodation descriptions by visiting nstgroup.co.uk and selecting your subject and destination.

We've only featured a small sample of our entire range. So, for expert advice that's tailored to your exact needs, speak to one of our Educational Travel Advisors today.

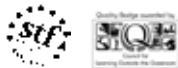




Safe in Our Hands

We've been totally committed to providing the highest possible standards for safety and financial security since 1967. Our approach to safety management will offer the reassurance we know is of utmost importance to both you and to parents.

Quality Assured



NST is an Assured Member of the School Travel Forum (STF), an awarding body for the prestigious Learning Outside the Classroom Quality Badge and the benchmark provider for good school tours. Our systems and procedures are fully audited annually by independent experts. For your protection, our Safety Management System covers:



✓ 24 hour emergency cover

✓ Audited accommodation & transport

✓ Excursions & visit assessment

✓ Group Leader preview

This means that you can book your trip with confidence, meet your due diligence and reduce the amount of external provider paperwork necessary. We can also assist you with your own risk assessments by providing inspection visits and a practical guidance booklet to save you valuable time.



The Outdoor Education Advisors Panel (OEAP) endorses the Quality Badge and requests local authorities to recommend the use of badged providers.

Preview Visits

To be sure you're getting exactly the right tour before you travel, you'll qualify for a two night complimentary stay* for two people in your chosen destination. You'll be able to try out your chosen accommodation and confidently complete your own risk assessments.

Financial Protection



You'll have financial protection from the moment you book to your safe return with NST because we are fully bonded through ABTA and ATOL. This is the best way for you to protect parents' money and give yourself peace of mind. And don't forget - if you book direct with the airline, you may not be covered.

Teacher feedback

"As a teacher responsible for the safety of 41 pupils, it was great knowing I had people at NST that I could 100% rely on. This was the first time that we had arranged an overseas trip and I felt at ease asking what might seem like trivial questions - but by the quality of the support offered, we felt organised and confident with what we were doing."

Graham Parry, Hamilton Grammar School



nstgroup.co.uk

There's now more information than ever before on our website!

*Terms & conditions apply. See page 35 for details.





Value All the Way

We know that in today's economic climate it can be difficult to get the numbers you need to run a school trip. With this in mind, we've made some changes and now any size of group can take advantage of our Early Booking Discount and our Loyalty Reward. So you'll be able to take advantage of additional savings from your first consecutive year of travel – and that applies to stays as short as one night too.

Early Booking Discount & Loyalty Reward

Any size of group can now take advantage of our Early Booking Discount and Loyalty Reward. Plus, our Loyalty Reward is now available for stays as short as one night too.

Long Haul Destinations

Early Booking Discount

Save £20_{pp}

when you book by
31st May 2012

+

Loyalty Reward

Save £5_{pp}

from your first
consecutive year of
travel onwards

=

Save up to
£25_{pp}

European Destinations

Early Booking Discount

Save £10_{pp}

when you book by
31st May 2012

+

Loyalty Reward

Save £5_{pp}

from your first
consecutive year of
travel onwards

=

Save up to
£15_{pp}

UK Destinations

Loyalty Reward **Save £5_{pp}** from your first consecutive year of travel onwards



Free Places

We offer a generous free place ratio of 1 in 10 for air travel and 1 in 8 for coach travel to Europe and UK.

Large Group Discount

£4_{pp} discount for groups of 42 paying passengers (per coach) taking a coach-based tour outside the UK or 40 paying passengers travelling by air.

Design Tour Clothing for Your Group!

If you'd like to create a clothing design for students to wear on their tour, now you can with NST! Personalised, professionally-made sweatshirts, polo shirts and t-shirts are a great way to build excitement and will be a special memento of your tour experience. Plus, branded clothing makes it easier to identify group members whilst you're out and about too. Speak to your Educational Tour Co-ordinator for more details.



Terms & conditions apply. See page 35 for details.

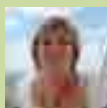




London

2 days from £95_{PP}

A visit to the capital city offers immense value to Psychology and Sociology students and is an ideal way to boost A01 and A02 grades. We can tailor an itinerary to your group's exact requirements, including travel, accommodation, visits and meals. From the Freud Museum and Tavistock Centre, to a Jack the Ripper walking tour, you can cover a wide range of key study topics in and around central London.



Jenny Toal

Our Expert's Introduction

London is a fantastic place for students to see cultural diversity first-hand. Here, they can undertake practical observations and investigations. As a past examiner, I highly recommend the Freud Museum as few students get high marks on psychoanalytic theory or in applying a psychodynamic approach to topics. The museum presents a great opportunity to improve your students' knowledge and for them to perhaps gain a little more respect for Freud's work.

Study Themes

- Memory • Research & Treatment Methods • Social Development & Influence • Intelligence & Learning • Health & Clinical Psychology • Psychopathology
- Prejudice & Ethics • Depression, Stress & Addiction • Dysfunctional Behaviour

Key Educational Visits

Freud Museum Includes discussion sessions

The home of Sigmund Freud and his family until 1982, this museum helps students to understand Freud's approach and aids exam knowledge. Students can explore the resources of the museum, see Freud's study and consulting room, and discuss Freud's work at times when the museum is closed to the general public (on Mondays and Tuesdays). The museum can provide your group with tailored discussion sessions based on pre-set worksheets on a range of psychoanalytic topics. Self-guided audio tours are also available Wednesday-Sunday, which last around 90 minutes, however a guide can also be requested on these days (subject to availability).

The Holocaust Exhibition KS4 & KS5 only

The informative Holocaust Exhibition at the Imperial War Museum uses historical material to tell the story of the Nazi persecution of the Jews and other groups before and during World War II. An audio tour and tailored teaching session will enable groups to focus on key psychological topics such as Prejudice and Social Influence. We highly recommend this visit. A cafe is also available on site for lunch, if required.

More Key Educational Visits

Tavistock Centre Only available with NST

This NHS Foundation Trust is renowned worldwide as a specialist provider of high quality mental health care for children, families and adults. Their approach has particular emphasis on psychological, social and lifespan approaches to prevention and treatment. They are major providers of training and education for mental health professionals and a strong centre for mental health research. The Tavistock Clinic and the Portman Clinic joined forces in 1994 and became a Foundation Trust in 2006.

Students will have the opportunity to visit this out-patient mental health clinic and hear from clinicians in a workshop setting. They will also speak to a range of psychologists and hear about the different pathways into clinical psychology as a profession. An introduction into the history of the clinic - which dates back to World War I - as well as its work will usually be given by a Consultant Psychologist. Your group will also watch a recorded clinical session and interact with professionals through a Q&A scenario.

To make your Tavistock Centre visit run more smoothly, we can arrange for your group to have lunch here. **Don't forget, this visit is extremely popular with school and college groups so make sure you book early to avoid disappointment.**

The Tavistock and Portman 
NHS Foundation Trust

ZSL London Zoo

Visit this fantastic zoo in the heart of London, observe the animals and combine with a choice of educational sessions designed to match your curriculum requirements.

- **Phobias Session** - Guest speaker John Clifford, a clinical hypnotherapist, talks about phobia triggers and responses during these two 40-minute sessions. During the presentation, listen to a case study about the 'ZSL Friendly Spider Programme', before taking part in a hypnosis therapy demonstration and graduated exposure to an animal that commonly causes a phobic response. Sessions are available during the spring and autumn term. Over 16s only.
- **Animal Learning & Intelligence** - Students will explore and discuss how animals learn, and find out how the zoo uses this knowledge for their welfare during this 45-minute session. Focus on how knowledge of classical and operant conditioning is used when training zoo animals for veterinary procedures. Includes meeting an animal where possible.

Other sessions available are listed on page 15.

The Wellcome Collection Free

The Wellcome Collection explores the connections between medicine, life and art in the past, present and future. The venue provides insight to anyone seeking to understand medicine and its role in society - past and present. Free guided tours of exhibitions are available for pre-booked groups.

Jack the Ripper Walking Tour Ideal evening activity

This eerie yet informative evening activity led by expert guides provides an insight into the mindset of this renowned murderer and maps his trail of terror. A popular visit for Psychology groups, this 1¼ hour tour will thrill your students!

Crime & Punishment Visits

Original materials provide a chance to learn how attitudes have changed over time.

- **National Archives** - Attend a crime and punishment workshop.
- **Tower of London** - Ethical consideration of attitudes towards crime.
- **Museum of London** - Understand punishment changes since Roman Britain.

Jewish Museum

This museum encourages understanding of the social psychology of the Holocaust, as well as the moral, spiritual and personal dimensions. Tailor-made educational workshops available include Never Again Auschwitz, Witness the Witness and Faith & the Holocaust.

- **Meet a Holocaust Survivor** - The Jewish Museum offers the rare opportunity to meet a Holocaust survivor and hear their testimony. This is an experience that students and staff will never forget.

Health Medicine Visits

Visit options include the Old Operating Theatre Museum, the Alexander Fleming Laboratory Museum & the Florence Nightingale Museum.

London Science Museum New for 2012/13

This fantastic museum offers five object rich galleries to intrigue your KS4 and KS5 Psychology students, including:

- Psychology: Mind Your Head
- Who Am I?
- The Science of Art & Medicine
- In Future
- Health Matters

Natural History Museum New for 2012/13

Visit the new Darwin Centre and watch a pre-booked 50 minute interactive film in the Attenborough Studio entitled 'Who do you think you really are?'. Afterwards, we recommend exploring the Human Biology gallery, which covers memory and how our memory functions.



Science & Pseudoscience Conference in London



10.30am - 4.00pm
Tuesday 20th
November 2012

This conference aims to educate, entertain and enthuse your students, facilitating their understanding of science and increasing their motivation for studying Psychology.

NST's access to this popular event allows us to book your place at the conference as part of your school trip to London. Why not stay overnight in our choice of local accommodation and visit some of our other fantastic Psychology highlights in London while you're there?

Speakers (subject to confirmation) include:



• **Psychologist Professor Richard Wiseman – The Luck Factor/The Psychology of Magic & Illusion**

Richard started his working life as a professional magician and currently holds Britain's only Professorship in the Public Understanding of Psychology at the University of Hertfordshire. He frequently appears in the media, and has written over 60 academic articles and several books, including *The Luck Factor* and current best seller *59 seconds*.

• **Andrew Newton – Hypnosis**

Andrew is one of the most successful and experienced hypnotists in the world. He has over 5,500 public and television appearances under his belt and has hypnotised more than 55,000 people over 30 years. Andrew originally taught Paul McKenna and inspired a host of others. His dynamic approach has earned him the reputation of being one of the world's foremost experts in hypnosis.

• **Phil Banyard – Science and Pseudoscience**

Phil is a Senior Lecturer at Nottingham Trent University, former Chief examiner for OCR.

• **Mike Cardwell – The 'Science' of Attraction**

Mike is a Senior Lecturer at Bath Spa University, and former Chief examiner for AQA.

• **Cara Flanagan – In Defence of Lab Experiments**

Cara is a widely published author of A-level Psychology books, experienced senior examiner and conference speaker.

Call NST now to reserve your groups' place on 0845 293 7975

Other conference dates and locations are available. Contact us for further details.





Leisure Visits

London Eye

For a fantastic bird's eye view of England's capital city, take a ride on the EDF Energy London Eye. Spot famous landmarks and take in the 30-mile panoramic view. Plus enjoy fantastic group prices with NST.

Thames River Cruise

A leisurely cruise down the Thames is a great way to see London. Our most popular option is a ½-hour trip which starts at the Houses of Parliament. Unravel the city's many layers of history and take in sights which include the EDF Energy London Eye, St Paul's Cathedral and the Tower of London.

Madame Tussauds

See wax models of historical and royal figures, film stars, sports stars and even famous murderers! Entry price includes the 'Chamber Live' horror section, with both wax and real people! Guaranteed to delight and thrill your students. Don't forget your camera!

Wembley Stadium

Take a 90-minute tour which will include England's changing rooms, players' warm-up zone, VIP reception area, the Royal Box, an opportunity to lift the cup, dugouts, post-match interview area, press conference room, treatment rooms and the Bobby Moore statue.

London Dungeons



Highly recommended

History is brought to life in chilling reality. The Dungeon will reinforce your students' historical education in an accurate, dramatic and thought-provoking way. Your group will witness scenes of British history depicting human sacrifice, martyrdom, torture, witchcraft and many little known yet curious facts of the lives of our forebears. Go back to the Great Fire of London and be plunged into the heart of a searing inferno or take a dark boat ride in the role of condemned prisoners.

ZSL London Zoo

In addition to the educational workshops detailed on page 13, there are a number of other sessions available at ZSL London Zoo, including:

- Investigate Animal Groups (Suitable for KS3)
- Feeding Groups and Food Chains (Suitable for KS3)
- Adaptations
- What Zoos Do (Over 16s only)
- Zoos and Conservation (Over 16s only)
- How Science Works: A Conservation Dilemma (Over 16s only)

Sessions last 35-45 minutes and are designed for a maximum of 30 pupils.

Highlights of London Guided Coach Tour

A Blue Badge expert guide will board your coach and really bring this extraordinary city to life for your group.

Bowling

A great low cost and convenient option to keep your group entertained.

We'll build your itinerary from scratch!
Simply choose your dates, then select your preferred visits and accommodation.

Take a look at this popular option...



London package prices from...

Price (per person) includes: accommodation, executive coach transport from & to school & throughout your stay, group travel insurance & 1 in 8 free place ratio*

Accommodation	Board Basis	Days/Nights	01 Sept 12 to 30 Sept 12	01 Oct 12 to 31 Oct 12	01 Nov 12 to 31 Dec 12	01 Jan 13 to 06 Feb 13	07 Feb 13 to 22 Feb 13	23 Feb 13 to 10 Mar 13	11 Mar 13 to 16 Apr 13	17 Apr 13 to 30 Apr 13	01 May 13 to 24 May 13	25 May 13 to 24 Jun 13	25 Jun 13 to 18 Jul 13	19 Jul 13 to 30 Sept 13
YHA Thameside	B&B	2/1	£99	£95	£95	£101	£105	£99	£105	POA	POA	POA	POA	£104
		3/2	£137	£131	£131	£150	£150	£146	£150	POA	POA	POA	POA	£144
MEININGER Hotel London Hyde Park	B&B	2/1	£102	£98	£94	£104	£109	£103	£114	£107	£112	£120	£124	£110
		3/2	£143	£142	£137	£156	£157	£153	£164	£156	£164	£169	£177	£155

Add our popular 2 day itinerary package from only **£35*_{PP}** - or choose your own!

	MORNING	AFTERNOON	EVENING
Day 1	Morning departure from school	Visit the London Science Museum's Psychology based galleries. Check into accommodation	Meal at Pizza Hut Jack the Ripper Walking Tour
Day 2	Freud Museum & Tavistock Centre visits Departure for return journey to school		

Add our popular 3 day itinerary package from only **£64*_{PP}** - or choose your own!

	MORNING	AFTERNOON	EVENING
Days 1 & 3	As above		
Day 2	ZSL London Zoo visit & Phobias Session	Free time in Covent Garden area	Meal at Hard Rock Cafe

*Prices shown based on 40 paying passengers from a departure point south of the M62 & are subject to availability. These guideline prices are based on the lowest prices available for each period. See pages 34-35 for terms & conditions.


Flexible Transport Options

We offer a range of travel options, including **executive coach**, **rail** and **flights**, to suit your group's exact needs. For more information, including departure point details, see page 4.

Flying home? When you book a coach transfer to take you home, upon landing at your UK airport you'll be met by an NST representative who'll escort you through the airport to your waiting coach.

Accommodation

On our website you'll find details of our most popular accommodation options in London, including:

-  MEININGER Hotel London Hyde Park
- only available with NST!**
- YHA Thameside

To download full accommodation descriptions of your preferred choices, simply visit: nstgroup.co.uk/psychology

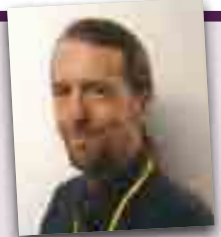
This is only a sample of our entire range, so for expert advice that's tailored to your exact needs, speak to one of our Educational Travel Advisors today.



Teacher feedback

"My students enjoyed the guided tours the best - Jack the Ripper and the Freud Museum in particular. Everyone thoroughly enjoyed this experience. We will be booking again for next year."

Annie Cramp, Psychology Teacher at Colonel Frank Seely Comprehensive School, January 2012



Our Psychology Tour to London

Jamie Gibson from St John's Marlborough School took his Psychology students to London in November 2011. Here, he shares his group's experience during the trip.

Our recent trip to London was a fantastic opportunity for my students to see psychology outside of the classroom.

The highlight of our trip was definitely a visit to the Tavistock Centre where my students experienced a real-life treatment centre. It was an excellent visit and a really useful opportunity to see some 'real' psychology in action. As part of the visit, my students were able to meet practicing psychologists and discuss their work with them, which they found motivating in their own studies.

A meal at Pizza Hut was also a highlight – according to the students!

The trip has created a buzz for the subject. Those that didn't go away now say that they wish they had. My students have gained so much from the trip in terms of personal enjoyment, social and personal development and relevance to the course they are studying (both IB and A-Levels). It has also helped to enhance their CVs for their UCAS applications.

On top of that, the service and support that I received from NST has been excellent. I'm looking forward to going back again in 2013.

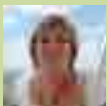




Vienna

including visits
4 days from £345^{PP}

The home of Sigmund Freud and the birthplace of psychoanalysis, Vienna provides a visit that's not to be missed in a tour of his apartment and office. The Nazi invasion in 1938, and the ensuing destruction of the city's sizeable Jewish community, also enable consideration of the prejudices and conformity that took place in several key sites within this truly cultural city. We very highly recommend the services of an NST Guide Lecturer who will provide in-depth background information, putting all visits in context and adding huge benefits to your tour.



Jenny Toal

Our Expert's Introduction

The city's museums, galleries and sights such as the old working class Jewish district, or the balcony from which Hitler gave his speech on the occasion of the Anschluss in 1938, may be used to illustrate many of the main themes of modern history. One needs to see beyond the usual tourist sights and the coffee and cakes shops, wonderful though they are!

Study Themes

- Psychopathology
- Social Influence: Conformity
- Prejudice & Discrimination
- Aggression
- Tyranny
- Ethics
- Applied Psychology: Cognition
- Dysfunctional Behaviour



Jeff Garner

Our Guide's Comment

I must say that I am delighted by how well recent tours to Vienna have gone, with excellent feedback from both students and staff. The two main study elements of the tour, Freud himself and the fate of the city's Jewish population, complement each other remarkably well and Vienna is just a wonderful city to spend any time in. The fact that every group that has been on the tour are planning to go again next year is particularly satisfying.



Key Educational Visits

Sigmund Freud Museum Highly recommended

Take a guided tour of Sigmund Freud's former apartment and office and see the excellent exhibition documenting the life and work of the founder of psychoanalysis. The exhibition features original furnishings, articles of daily use and antiques from Freud's collection, as well as temporary exhibitions. You will enter the rooms where new science was created and where Freud and his family spent 47 years.

Combined Jewish Museum Visits

We can arrange a combined guided tour of the three important sites below at a great value price.

- **Jewish Museum** - Take a free guided tour of this museum which provides an interesting picture of Jewish cultural and religious life within Vienna. In addition to permanent displays, including many religious and ceremonial items rescued from the Kristallnacht (anti-Jewish riots) in November 1938, its use of modern multimedia techniques also detail important figures and events in Jewish history.
- **Judenplatz Area & Museum** - The Judenplatz Museum provides visitors with an insight into Jewish life in medieval Vienna. Contained within the museum are the remains of a Synagogue destroyed by fire in the 15th century, plus other exhibits relating to the Jewish religious and cultural life of the period.
- **Stadttempel** - This is the only synagogue of Vienna to survive the Kristallnacht, thanks to its design. Today, the synagogue is the main temple for a Viennese Jewish Community of about 7,000 members.

Holocaust Memorial & Medieval Synagogue

Underneath the Holocaust Memorial, in the early 1990s, construction workers discovered the remains of a 13th century synagogue while digging for a new parking garage. The medieval synagogue was one of the largest of its time.

Outside the Judenplatz Museum stands a Holocaust memorial, taking the form of a mausoleum adorned with concrete cast books each inscribed with the names of the World War II death camps to mark the atrocity that took place.

Leopoldstadt

Set on an island between two branches of the Danube, Leopoldstadt was the home to many of the city's 180,000 Jewish population before the war. The once vibrant Jewish community links to the area began in the early 17th century and although all the synagogues and most other Jewish civic buildings were destroyed by the Nazis, there is still much evidence of the society that once flourished here and its terrible fate. Since the fall of the Iron Curtain, Leopoldstadt once again has a small but growing Jewish presence and a fascinating walking tour will consider how and why the Jewish community suffered, as well as their lives and attitudes today.

Memorial for the Victims of the Gestapo

This memorial to victims of Nazi terror is on the site of the former the Gestapo's wartime headquarters. This can be seen as part of a walking tour of the Leopoldstadt.

Teacher feedback

"My students enjoyed every part our recent trip to Vienna. They were very interested in the educational content, took great pleasure in exploring Vienna in their free time and above all, they loved our guide Jeff! He brought history to life and placed Freud's psychological work in a temporal context. Our experience was excellent – so much so that we are very enthusiastic to do it again next year!"

Kasia Chapman, The College of Richard Collyer, February 2012

Walking Tour of Key City Centre Sites

On this full day walking tour you'll visit St Stephen's Cathedral - the principle place of entombment for Holy Rome Emperors. Your tour will continue on to the shopping areas of Graben and the Kohlmarkt, Judenplatz. You can also visit the Hofburg Imperial Palace, Palais Augarten (home of the Vienna Boys' Choir), then carry on to the Spanish Riding School and Karlsplatz with its collection of secession buildings, then to the Soviet War Memorial.

Mauthausen Concentration Camp New addition

Travelling by coach, groups can make the two hour journey to visit this camp that was established August 1938, where 100,000 people lost their lives. It was built by the SS to establish a concentration camp for men, in preparation for the impending war. The camp fulfilled two functions: to restrain opponents of Nazism by interning, torturing and killing them and also to exploit their labour to the utmost. Mauthausen was the only category III concentration camp in Austria, the classification with the most brutal detention conditions.

Students aged 14+ can either explore the memorial on their own using free audio guide systems, or a free guided tour can be arranged by NST.

The Town of Linz: Hitler's 'Home Town' New addition

A great follow-on visit after Mauthausen Concentration Camp is the beautiful city of Linz. Adolf Hitler moved to Linz in his childhood and spent most of his youth in the area until 1907, when he left for Vienna. Hitler also attended school in Linz and he had wished to be buried here. See some key sites related to Hitler, including the balcony where Hitler proclaimed the Greater German Reich, before exploring this previous Capital of Culture winner.



Hofburg Imperial Palace & Belvedere Palace

Now containing the Museum of Ethnology, the complex of Hofburg also features a range of museums with imperial connections including The National Library, Imperial Treasury, and the famous Spanish Riding School. The Belvedere Palace, the former residence of the Prince of Savoy, makes for a truly spectacular visit being split into two palaces and containing three important art galleries. The large grounds are beautiful and provide fantastic photo opportunities.

Outlying Sites of Vienna Tour

Visit Karl Marx Hof, one of a number of municipal housing projects undertaken during the 1920s and 1930s which was destroyed during the Civil War then renovated during the 1980s, pass the men's hostel in Brigittenau where Hitler resided, and the Schönbrunn Palace in the Schlosspark. A public transport pass is the best way to see these sites.



Sigmund Freud Museum, Vienna. Photographer: Emmanuel Dyan

NST Guide Lecturers Highly recommended



Why not add an NST Guide Lecturer to your tour package. Your guide will:

- ✓ Deliver detailed background information on all key visits, putting them into context to allow consideration of Psychology and Sociology study themes
- ✓ Have an understanding of the needs of students and information delivery
- ✓ Understand the pressures and requirements of Group Leaders
- ✓ Be selected from a specialist team to meet your exact visit requirements
- ✓ Be a highly experienced and knowledgeable educationalist
- ✓ Have a proven track record of delivering excellent results

Benefits of NST Guide Lecturers

A Strong Teaching Background

All of our guides are ex-teachers with specific expertise. Their educational background and knowledge of current study themes will help them meet your specific needs. As former teachers they also understand the demands and requirements of organising educational visits.

Helping You to Prepare Your Ideal Itinerary

Our guides will contact you before your tour to discuss your learning objectives. They will then advise on the appropriate visits to build an itinerary that matches your specified objectives and enables your group to get the most out of every day.

More Time for One-to-One Teaching

With an NST Guide Lecturer leading the group, you gain the opportunity to provide individual tuition and enjoy the visits with your students.

First Evening Talk

Your Guide Lecturer will provide an informal discussion on your first evening, setting the scene for the next few days. Helping students focus on the days to come and covering many general questions up front, this talk will allow more time for specific questions at each site.

Leisure Visits

Riesenrad 'Prater Park'

An ideal way to end a day! The 'Prater Park' is home to many rides, including the *Reisenrad*, which was once the largest Ferris wheel in the world. The park is open for visitors and all the rides and attractions individually priced. A ride on the *Reisenrad* is highly recommended for unique views of Vienna.

Bowling

This is a popular evening activity for groups in the city centre.

Museum Quarter - Natural History Museum

An ideal place to spend your last morning. This oasis of culture and recreation includes the highly recommended Natural History Museum however several art galleries are also available.

Ice Skating

In February and March, a popular skating arena is available to use outside the city hall. Other rinks are available throughout the year in the city.

We'll build your itinerary from scratch!
Simply choose your dates, then select your preferred visits and accommodation.

Take a look at this popular option...



Inclusive Vienna package prices from...

Price (per person) includes: accommodation, return flights & airport transfers in resort, Guide Lecturer (where specified), visits shown, extensive group travel insurance & 1 in 10 free place ratio*

Accommodation	Board Basis	Days/Nights	Itinerary	LOW SEASON	MID SEASON	HIGH SEASON
				01 Jan 13 - 22 Feb 13 11 Mar 13 - 16 Apr 13	01 Sept 12 - 31 Dec 12 23 Feb 13 - 10 Mar 13 17 Apr 13 - 30 Apr 13 01 Jul 13 - 30 Sept 13	01 May 13 - 30 Jun 13
MEININGER Hotel Vienna Downtown Franz	HB	4/3	Self Guided	£345	£369	£382
			With Guide Lecturer	£371	£394	£407
	HB	5/4	Self Guided	£382	£407	£424
			With Guide Lecturer	£419	£449	£465

	MORNING	AFTERNOON	EVENING
Day 1	Daytime flight & transfer to accommodation Free time		Free time to settle in Evening meal
Day 2	Visit to the Sigmund Freud Museum	Walking tour of Vienna key historical sites	Evening meal
Day 3	Visit the Jewish Museum, Judenplatz Museum & Holocaust memorial	Walking tour of the Old Town & Leopoldstadt (Jewish District)	Free time in the Prater Park Evening meal
Day 4	Free time at the Natural History Museum Transfer to airport for return flights to UK		
5 day/4 night tour includes:	Full day coach excursion to Mauthausen Concentration Camp & the Town of Linz		Evening meal

*Prices shown based on 35 paying passengers departing from a London airport & are subject to availability. Flight supplements may apply. Other departure airports are available. Entrance fees for some of the visits featured may be payable locally, but are included in the price shown. These guideline prices are based on the lowest prices available for each period. See pages 34-35 for terms & conditions.

Flexible Flight Options

We offer **flights** from a variety of departure airports. For more information, see page 4.

Plus, when you book a coach transfer to take you home, upon landing at your UK airport you'll be met by an NST representative who'll escort you through immigration, baggage claim and customs, then take you to your waiting coach.

Accommodation

On our website you'll find details of our most popular accommodation options in Vienna, including:



- MEININGER Hotel Vienna Downtown Franz
- MEININGER Hotel Vienna Downtown Sissi
- MEININGER Hotel Vienna City Centre



To download full accommodation descriptions of your preferred choices, simply visit:

nstgroup.co.uk/psychology

This is only a sample of our entire range, so for expert advice that's tailored to your exact needs, speak to one of our Educational Travel Advisors today.



Getting Around

If required, your group can purchase U-Bahn tickets to get around Vienna more quickly. A 48-hour ticket is only €10pp and a single ticket is less than €2pp purchased locally.

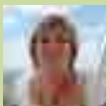


Auschwitz-Birkenau. Photographer: MongFish

Krakow

including visits
3 days from £329^{PP}

Evidence of war on Europe’s Jewish population in ghettos such as Podgorze, coupled with a visit to Auschwitz-Birkenau, will enable students to analyse the persecution which took place. Students can consider the topics of Conformity and Obedience in Nazi Germany, possible psychological profiles of those involved and even discuss actual experiences with a concentration camp survivor at the Galicia museum.



Jenny Toal

Our Expert’s Introduction

Conformity and Obedience feature highly in all the specifications, but learning about them in a classroom does not have the same effect as when students see the evidence for real. They will be able to appreciate the power people can have over others. This fascinating destination offers the opportunity to challenge your students’ viewpoints. I thoroughly recommend an NST Guide Lecturer for this tour.

Study Themes

- Social Influence: Conformity • Obedience • Prejudice & Discrimination • Aggression • Applied Psychology: Cognition • Ethics • Tyranny
- Dysfunctional Behaviour

Key Educational Visits

Galicia Museum



Presenting Jewish history from a new perspective, this private museum celebrates the Jewish culture of Galicia and commemorates the victims of the Holocaust. Through exhibitions, education programmes and cultural events, students have the opportunity to contextualise their understanding and experience of the Jewish past in Poland.

Meet with a Concentration Camp Survivor or a Member of the Righteous Among the Nations

Groups have the invaluable opportunity to meet and speak with concentration camp survivors or with recipients of the Righteous Among the Nations award at the Galicia Museum. This is an incredible, poignant chance to hear moving eye-witness testimony and gain first-hand insight into life under Nazi rule. Common themes covered often include conflict, prejudice and the values of tolerance and understanding.

More Key Educational Visits

Auschwitz-Birkenau

Following the Nazi invasion of Poland in September 1939, Oświęcim was incorporated into the domains of the Third Reich. The town's name was changed to Auschwitz and it became the largest concentration and death camp. Today, as a museum, Auschwitz serves as a poignant reminder of the horrors of Hitler's tyranny and a guided visit will give students a fuller view of the terrible events and conditions.

Kazimierz (Former Jewish District)

Visit the old synagogues and the cemetery as well as iconic Jewish sites and museums. This historic Jewish district was left deserted as residents were forced by Nazis to move to the Podgorze ghetto.

Podgorze (The Wartime Ghetto)

In March 1941, the entire Jewish population of Krakow were crammed into this tiny ghetto as Nazi prejudice took hold. Also the location of Schindler's Factory, students can explore the ghetto and consider the anti-Semitic events which took place here before large numbers of Jews were sent to labour and death camps.

Krakow Old Town

Now a UNESCO World Heritage Site, the old town was entered by German forces in 1939. Museums, schools and theatres closed, arrests were made and synagogues were destroyed. The tyrannies continued until 1945 when the German army was forced to withdraw.

Around the Old Town Square

The largest medieval town square in Europe is now a lively tourist spot and includes St Mary's Church, the town hall tower and the Sukiennice (Cloth Hall).

Wawel Hill

In a fortified position overlooking the river and city are the Castle and Cathedral.

The Schindler Museum

This newly opened museum not only tells Schindler's story, but it covers every aspect of the Polish and Polish-Jewish experience of occupation in a way that is hugely relevant to British students. We thoroughly recommend this excellent visit, made famous by Spielberg's film, Schindler's List.

NST Guide Lecturers Highly recommended



Why not add an NST Guide Lecturer to your tour package. Your guide will:

- ✓ Deliver detailed background information on all key visits, putting them into context to allow consideration of Psychology and Sociology study themes
- ✓ Have an understanding of the needs of students and information delivery
- ✓ Understand the pressures and requirements of Group Leaders
- ✓ Be selected from a specialist team to meet your exact visit requirements
- ✓ Be a highly experienced and knowledgeable educationalist
- ✓ Have a proven track record of delivering excellent results

Benefits of NST Guide Lecturers

A Strong Teaching Background

All of our guides are ex-teachers with specific expertise. Their educational background and knowledge of current study themes will help them meet your specific needs. As former teachers they also understand the demands and requirements of organising educational visits.

Helping You to Prepare Your Ideal Itinerary

Our guides will contact you before your tour to discuss your learning objectives. They will then advise on the appropriate visits to build an itinerary that matches your specified objectives and enables your group to get the most out of every day.

More Time for One-to-One Teaching

With an NST Guide Lecturer leading the group, you gain the opportunity to provide individual tuition and enjoy the visits with your students.

First Evening Talk

Your Guide Lecturer will provide an informal discussion on your first evening, setting the scene for the next few days. Helping students focus on the days to come and covering many general questions up front, this talk will allow more time for specific questions at each site.



Kazimierz. Photographer: Pete Ford

We'll build your itinerary from scratch!
Simply choose your dates, then select your preferred visits and accommodation.

Take a look at this popular option...



Inclusive Krakow package prices from...

Price (per person) includes: accommodation, return flights & airport transfers in resort, coach transportation as detailed, Guide Lecturer (where specified), visits shown, extensive group travel insurance & 1 in 10 free place ratio*

Accommodation	Board Basis	Days/Nights	Itinerary	LOW SEASON	MID SEASON	HIGH SEASON
				01 Sept 12 - 15 Oct 12 01 Nov 12 - 06 Feb 13 23 Feb 13 - 10 Mar 13	17 Apr 13 - 30 Sep 13	16 Oct 13 - 31 Oct 13 07 Feb 13 - 22 Feb 13 11 Mar 13 - 16 Apr 13
Hotel Galicya	HB	3/2	Self Guided	£329	£340	£354
			With Guide Lecturer	£364	£373	£387
	4/3	Self Guided	£359	£379	£385	
		With Guide Lecturer	£401	£415	£424	

	MORNING	AFTERNOON	EVENING
Day 1	Daytime flight & transfer with assistance to accommodation	Free time in Krakow for orientation & getting to know Poland	Evening meal Lecture on Poland & the Holocaust
Day 2	Guided walking tour of Krakow - Old Town Square area	Kazimierz, Podgorze & exterior of Schindler's factory. Visit to Galicia Museum to meet with a Concentration Camp Survivor	Late evening meal
Day 3	Full day coach excursion to Auschwitz-Birkenau including a guided tour		Evening meal Free time in Krakow Old Town
Day 4	Free time for shopping Transfer to airport for return flight to UK		

*Prices shown based on 35 paying passengers from a London airport & are subject to availability. Flight supplements may apply. Other departure airports are available. Entrance fees for some of the visits featured may be payable locally, but are included in the price shown. These guideline prices are based on the lowest prices available for each period. See pages 34-35 for terms & conditions.

Flexible Transport Options

We offer a range of travel options, including flights and executive coach (via ferry or Eurotunnel), to suit your group's exact needs. For more information, including departure point details, see page 4.

Flying back to the UK? When you book a coach transfer to take you home, upon landing at your UK airport you'll be met by an NST representative who'll escort you through immigration, baggage claim and customs, then take you to your waiting coach.



Kazimierz. Photographer: Pete Ford

Accommodation

Popular Options in Krakow

On our website you'll find details of our most popular accommodation options in Krakow, including:

- Hotel Galicya
- Hotel Wyspianski

New! Downloadable Accommodation Descriptions



To download full accommodation descriptions of your preferred choices, simply visit:
nstgroup.co.uk/psychology

This is only a sample of our entire range, so for expert advice that's tailored to your exact needs, speak to one of our Educational Travel Advisors today.



Memorial at Plaszów Concentration Camp, Podgorze. Photographer: Jennifer Boyer

Krakow & Berlin Highly recommended with a Guide Lecturer

Single & Two-Centre Tours

Why not combine your tour to Krakow with some time in Berlin to follow the full story of the Holocaust and give your students a deeper insight into key study themes, such as Conformity and Obedience?

In addition to our single centre tours, we offer two-centre tours to Krakow and Berlin. Popular visits include:

- ✓ Neue Synagogue
- ✓ House of The Wannsee Conference
- ✓ Sachsenhausen Concentration Camp
- ✓ Ravensbrück Concentration Camp
- ✓ Introductory Walking Tour
- ✓ Religious Studies Walking Tour of Berlin Centre

Call today for details of our tailor-made itineraries.





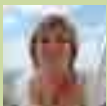
The National September 11 Memorial. Photographer: Kai Brinker

New York

New destination!

5 days from £699_{PP}

The entry point to land of the free for the 1880-1920 wave of immigration, then mass post World War II immigration, including Jewish Holocaust survivors from Europe created a post-war economic boom in New York. A combination of excellent immigration and Holocaust-focused visits, together with world-famous New York tourist attractions create the ultimate trip for Psychology and Sociology students. The tragic events of September 11th 2001 also encourage a whole host of study themes which can be addressed by visiting the memorial, museum and meeting persons involved in the terrible events.



Jenny Toal

Our Expert's Introduction

This fantastic new programme should excite all teachers and students of Psychology or Sociology! With a great selection of educational visits that tie in directly with key study themes across most curricula, this tour will allow fascinating insights into key events in New York, including 9/11 where 'flash-bulb memory' is a suggested consideration. Immigration and considering NYC's 'multiculturalism' are also key discussion and research areas - and of course, not forgetting the world-famous tourist attractions here!

Study Themes

- Immigration
- Prejudice
- Terrorism
- Influence
- Memory
- Tyranny
- Dysfunctional Behaviour
- Psychology of Media
- Stereotyping
- IQ Testing
- Social Identity
- Multiculturalism

Key Educational Visits

Ellis Island Immigration Museum Visit & The Statue of Liberty Cruise

Ellis Island opened in 1892 as a federal immigration station and millions of newly arrived immigrants passed through the station. Close to 40% of all current U.S. citizens can trace at least one of their ancestors to Ellis Island. Immigrants who weren't first or second class passengers were made to undergo strict IQ testing. A 45 minute audio tour invites students to relive the immigrant experience as if they were the new arrivals and includes artifacts, photos, interactive displays and videos including the award winning 'Island of Hope, Island of Tears'.

You will visit the Island as part of a short boat cruise which passes the Statue of Liberty which was the first sight for the millions of immigrants.

Statue of Liberty Inscription

"Give me your tired, your poor, your huddled masses yearning to breathe free, The wretched refuse of your teeming shore. Send these, the homeless, tempest-tossed to me, I lift my lamp beside the golden door!"

More Key Educational Visits

September 11 Visits & Experiences

'My September 11 Experience' at the Tribute WTC Visitor Center



NST groups have a unique opportunity to meet someone personally involved in the tragic events of September the 11th 2001. Students will have chance ask questions and hear their own account of the day and the persons views today. This 30 minute question and answer session follows a self-guided visit through exhibits, film, artifacts, and the voices of those who experienced the events first hand with additional information about the affects of 9/11 and the future plans for ground zero.

Ground Zero Museum

Book a private tour of this collection as featured in worldwide media. The museum is an ideal way to educate students about 9/11 and the 'Recovery'. Your tour includes a video presentation, an interactive walk-through of the World Trade Center artifacts, followed by a self-guided audio experience of 80 thought-provoking images.

September 11 Memorial Visit

The 9/11 Memorial was dedicated on September 11, 2011 in a ceremony for victims' families. The Memorial honours the 2,983 who perished in the terrorist attacks of September 11, 2001 and February 26, 1993. The Memorial allows visitors to come together again in the spirit of unity and courage that emerged in the wake of 9/11. The Memorial consists of two pools set in the footprints of the Twin Towers, surrounded by a plaza of more than 400 trees. The names of the victims are inscribed in bronze around the pools.

The National September 11 Memorial Museum

Expected to open in early 2013, the museum will explore the implications of the events of 9/11, documenting the impact of those events and exploring 9/11's continuing significance. It will demonstrate the consequences of terrorism on individual lives and its impact on communities at a local, national, and international level. The museum is growing a permanent collection of artifacts, stories, photos, video and other material.

Lower East Side (Immigrant Neighborhood) Walking Tours

Outside the Home: See the Lower East Side through the eyes of the immigrants who have lived here for 150 years during this 1 1/2 hour tour. Discover the towering Jarmulowsky Bank building, where immigrants deposited (and eventually lost) their life savings; the Daily Forward building, where socialists fought for worker rights; and PS 42, where generations of immigrants learned how to be "American".

Then and Now: For generations of immigrants, the Lower East Side wasn't just a place to find a cheap home. It was also where they learned how to start a business, build a congregation and educate their children. Discover the fascinating history of this neighbourhood during this 2 hour tour and find out why it's such an ever-changing mix of the old and the new.

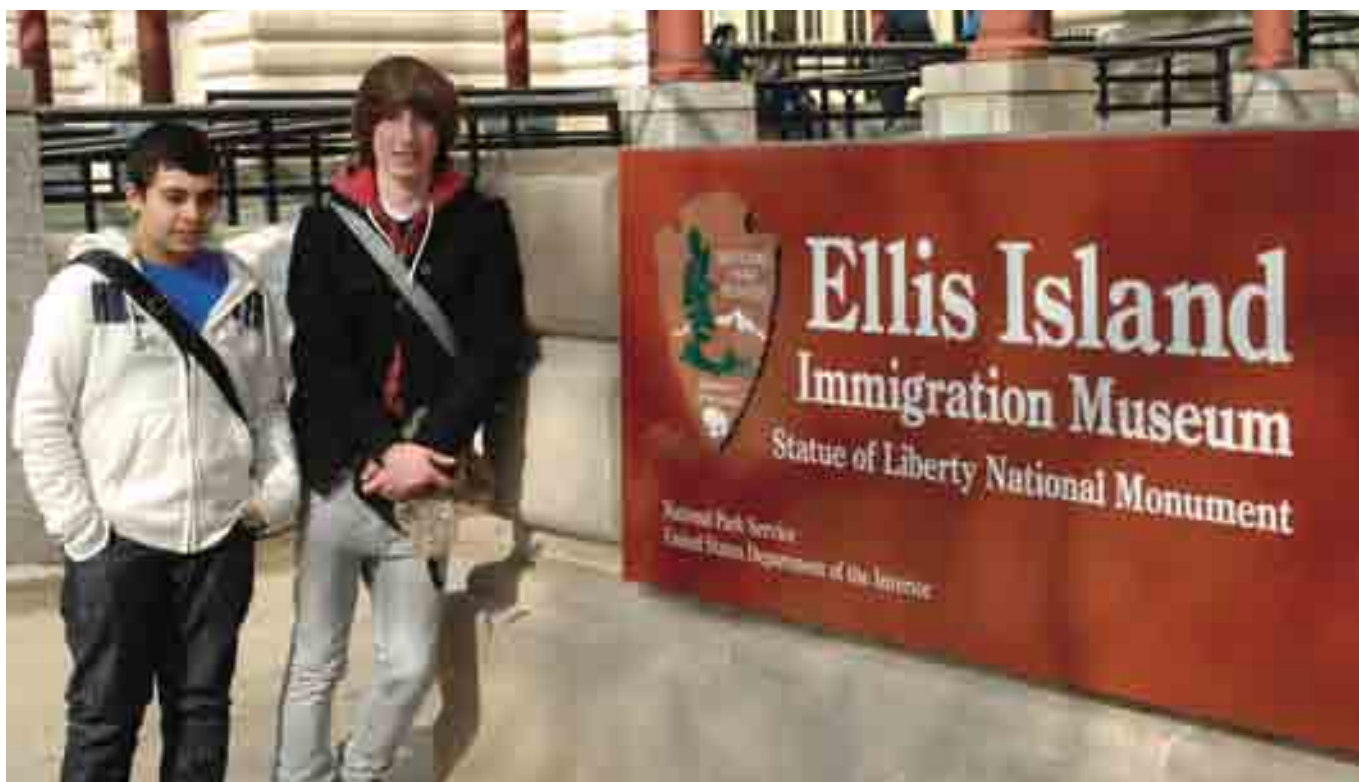
The Power of Advertising Session

What makes people buy and how are they influenced? Learn about these advertising techniques and hear from a media professional working within the Madison Avenue or television advertising industry. Sessions last 90 minutes and can be tailored to your group's individual requirements.



"I am extremely happy with our tour to New York. It really was an unforgettable experience that could not have been smoother and I am very satisfied with the service that I received. I won't hesitate to continue booking with NST and to recommend NST to friends and colleagues!"

Claire Hodge, Greenshaw High School



More Key Educational Visits

Tenement Museum

The museum tells the story of immigrant families who have lived in and around the building since the 19th century. Students can tour the building and visit the restored apartments of past residents from different time periods through the following options:

Hard Times: Tour and Discussion: Spend extended time inside the Gumpertz and Baldizzi apartments and join in a discussion about themes arising from the tour during this 2 hour session. Share experiences, thoughts and family histories with your educator and fellow visitors.

Irish Outsiders: Experience the heart of the immigrant saga through the music of Irish America, then tour the restored home of the Moore family, Irish-Catholic immigrants coping with the death of a child in 1869. During this hour-long tour, your group will compare the Moore's struggle to keep their family healthy with that of the Katz family, Russian-Jewish immigrants who left their 'mark' on our building in the 1930s.

Meet the Resident: Visit the apartment of a Greek Sephardic family and meet a costumed interpreter playing 14-year-old Victoria Confino, who lived in the tenement in 1916. Visitors take on the role of newly arrived immigrants, and ask Victoria questions about adjusting to life on the Lower East Side. Designed for families, this tour allows visitors to handle household objects.

The Jewish Museum

Exclusively devoted to Jewish culture and art, the museum's collections now comprise of 27,000 items and seeks to answer 'How have the Jewish people been able to thrive for thousands of years, often in difficult and even tragic circumstances?' and 'What constitutes the essence of Jewish identity?'. The permanent 'Culture and Continuity: The Jewish Journey' exhibition tells the story of the Jewish people through art and media, including radio and television programmes related to the Jewish experience.

The Center for Jewish History

The Center is one of the great public Jewish historical and cultural institutions in the world and holds some of the most important resources for exploring and documenting all aspects of Jewish experience and identity. The collections total more than 500,000 volumes and 100 million archival documents, and include tens of thousands of pieces of artwork, textiles, and ritual objects, as well as music, films, and photographs.



Leisure Visits

Top of the Rock™

Experience the best and most complete daytime view of New York City! With its relatively short waiting times, the Rockefeller Building offers an informative guide and a unique view of the Empire State Building, Chrysler Building, Times Square, the Statue of Liberty, and Central Park.

We recommend that groups venture to the Top of the Rock™ in the daytime, and complement this with an evening visit to the top of the Empire State Building.

Empire State Building

Venture over ¼ of a mile skyward and take in the scale of the immense urban landscape which opens up before you. This is a great way for your students to appreciate the city away from the hustle and bustle of the streets below. A popular first evening visit.

The Beast! Speedboat

It's a thrill-a-minute aboard New York's fastest boat ride. Imagine flying across the waters of New York harbour at 45mph. An exhilarating alternative to our popular Circle Line Cruise, at no extra cost.

Circle Line Cruise

Take in a spectacular view of Manhattan, the Statue of Liberty and Ellis Island from the water, and pick out the famous landmarks which dominate its skyline.

Walking Tour of Midtown Manhattan

Experienced in taking school groups, our local guides will bring the history and culture of New York to life. Students will be amazed as they walk down world-famous streets such as Fifth Avenue, 42nd Street and Broadway and through Central Park and Times Square.

Walking Tour of Downtown Manhattan

Our expert guides can lead students through the neighbourhoods of Chinatown, Little Italy, SoHo and along Wall Street and Battery Park to give your group an insight into Manhattan life and the history of the city.

Statue of Liberty & Ellis Island

A cruise and an insightful visit which details the history of a great universal symbol of political freedom and democracy – the Statue of Liberty. Your group will learn about the important role this island played in immigration.

Free Time

As well as the visits listed, we are able to provide fantastic group prices on many other New York attractions. Or why not schedule in some free time for your group to shop 'til they drop at Macy's and Bloomingdale's, or Century 21! Call today with your preferences.

We'll build your itinerary from scratch!
Simply choose your dates, then select your preferred visits and accommodation.

Take a look at this popular option...



New York package prices from...

Price (per person) includes: accommodation, return flights & airport transfers in resort, extensive group travel insurance & 1 in 10 free place ratio*

Accommodation	Board Basis	Days/Nights	LOW SEASON	MID SEASON	HIGH SEASON
			01 Nov 12 - 06 Feb 13 23 Feb 13 - 10 Mar 13	01 Sept 12 - 31 Oct 12 07 Feb 13 - 22 Feb 13 11 Mar 13 - 30 Jun 13 22 Aug 13 - 30 Sept 13	01 Jul 13 - 21 Aug 13
West Side YMCA	RO	5/3	£699	£755	£959
		6/4	£729	£789	£1,005
Equity Point	B&B	5/3	£755	£785	£1,015
		6/4	£799	£829	£1,079

Add our most popular itinerary package from only **£55* PP** - or choose your own!

	MORNING	AFTERNOON	EVENING
Day 1	Daytime flight & transfer to accommodation		Visit to the Empire State Building
Day 2	Statue of Liberty cruise with visit to the Ellis Island Immigration Museum	Lower East Side (key immigration area) walking tour & Tenement Museum visit	Free time
Day 3	Free time on 5th Avenue	September 11 Memorial visit & time at Tribute WTC Visitor Center, including Q&A	Free time in Times Square
Day 4	The Power of Advertising session & time for last minute shopping & sightseeing	Transfer to airport for overnight return flight to UK	
Day 5	Arrive back in UK		

*Prices shown based on 25 paying passengers from a London airport & are subject to availability. Flight supplements may apply. Other departure airports are available. Entrance fees for some of the visits featured may be payable locally, but are included in the price shown. These guideline prices are based on the lowest prices available for each period. See pages 34-35 for terms & conditions.

Flexible Flight Options

We offer **flights** from a variety of departure airports. For more information, see page 4.

Plus, when you book a coach transfer to take you home, upon landing at your UK airport you'll be met by an NST representative who'll escort you through immigration, baggage claim and customs, then take you to your waiting coach.

Accommodation

Popular Options in New York

On our website you'll find details of our most popular accommodation options in New York, including:

- Equity Point - **New to NST! Great value school group hostel at Times Square. Individual beds for students & en-suite rooms.**
- West Side YMCA

New! Downloadable Accommodation Descriptions



To download full accommodation descriptions of your preferred choices, simply visit:

nstgroup.co.uk/psychology

This is only a sample of our entire range, so for expert advice that's tailored to your exact needs, speak to one of our Educational Travel Advisors today.

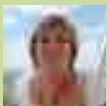




China

including visits
6 days from £999^{PP}

This ancient culture that's steeped in tradition became a strict and closed country under Chairman Mao. Your group will experience, first-hand, how Chinese behaviour has been shaped. It will become apparent to your students that tradition is still quite close to the surface of the Chinese psyche as the country continues to change rapidly. We offer a range of packages in China that offer truly memorable experiences for students.



Jenny Toal

Our Expert's Introduction

China is an ideal destination for everything that's different! It has its own diagnostic manual on the classification of psychiatric disorders. Its child-rearing practises and the role of family, especially the elderly, are different from Western culture and you will be able to discuss Western psychology viewed from an ethnocentric base.

Study Themes

- Social Influence • Relationships • Ethnocentrism • Cultural Differences of Treatment Methods • Social Psychology: Social Influence
- Education: The Social World of Teaching & Learning • Nomothetic & Ideologic Approaches • Core Studies: Approaches, Perspectives, Concepts & Methods

Key Educational Visits in Beijing

Beijing Gucoao Psychological Hospital Highly recommended

Situated opposite the Bird's Nest Stadium, the hospital covers more than 2,000 square feet. On this 2 hour visit, NST groups will receive an introduction by hospital staff before a tour of the departments including the consulting room, inspection and testing department, bio-feedback and exercise treatment rooms. Your group will then be able to listen to a Chinese Psychological Treatments talk comparing cultural differences to the West before time for a Q&A session.

Chinese School Cultural Visit

Take this unique chance for UK students to learn about Chinese educational and cultural differences. On a 3 hour visit, your students will share information about their life and school with local students. They'll take an activity class together followed by a tour of the campus, before a chance to exchange contact details and gifts.

More Key Educational Visits in Beijing

Local Hutong Visit & Rickshaw Ride

Take a fascinating tour of a local Hutong, a traditional suburb with courtyard residences. Travel by rickshaw to meet a family who live here and ask them about their lifestyle. Explore the traditional streets with its many shops, bars and restaurants.

Liumingying Village & Family Visit

This traditional Chinese village gives your group an insight into the hard reality of life outside the big cities. Students can visit villagers in their homes and see the hard work that goes into producing their organic food, and spend time speaking to one of the local families about their life here.

Tiananmen Square

This symbolic public square has witnessed many of the events that have shaped the country's often turbulent history.

Chairman Mao's Zedong Memorial Hall

Standing in Tiananmen Square, this is the chairman's final resting place. View his large marble statue and an immense tapestry of China's mountains and rivers, then view the body of Mao covered with the flag of Communist Party of China, resting in a crystal coffin.

Great Wall of China & Sacred Way

Built 2,500 years ago, the Great Wall is most definitely an attraction not to be missed! Climb the wall and take time to discuss its importance and history with your Local and National Guides. Later, walk some of the seven kilometers of the Sacred Way, flanked with detailed Ming Dynasty sculptures.

Forbidden City

Allow your students the opportunity to explore this mystical complex, which was for many years the symbolic heart of both the capital and the empire. It boasts a maze of 800 buildings and thousands of chambers, each constructed during the Mongol and Ming dynasties.

Temple of Heaven

Considered to be the most beautiful building in the city, the Temple of Heaven is conceived as the meeting point between heaven and earth and symbols of the two are integral to the temple's layout. Its park is also a popular area in which to sit, drink tea and play and it is easy to see how Chinese people find peaceful seclusion in the grounds.

Xian - Itinerary Add-On

Take the overnight train to Xian to marvel over the Terracotta Army, dating from 210BC and discovered in 1974. Make a short visit to the Huaqing Hot Spring before spending time at the Big Wild Goose Pagoda. Spend time exploring the Muslim Quarter, cycling the city walls, or enjoy a Tang Dynasty Show.

Shanghai - Itinerary Add-On

Take the 5 hour bullet train or internal flight to Shanghai, China's largest city. Visit the Oriental Pearl TV Tower, China's busiest shopping street, Naying Lu, and People's Square where Tai Chi is performed at sunrise. The Jade Pagoda Temple, the Yuyuan Gardens and the Huangpu River Cruise are also excellent visits.



Popular Cultural Experiences

Chinese Acrobat Show: Chinese acrobatics covers anything from gymnastics and animal tricks to juggling and magic. The performances are spectacular and students will be talking about them for years to come.

Olympic Stadium: The Beijing National Stadium, known colloquially as the Bird's Nest, was the spectacular setting for the 2008 Olympic and Paralympic Games. Students can tour this large steel structure while your guide shares their own memories of the games and the legacy the games have left behind.

Kung-Fu Show: Chinese martial arts have been practised for over 4,000 years and over the years have developed into a number of styles. This show showcases a spectacle of modern dance and traditional arts to provide a truly unique performance.

Friendship Store & Silk Alley: Beijing is somewhat of a shopper's paradise and the Friendship Store and Silk Alley in the city are two of the best. Students can practise their language skills by haggling for souvenirs such as silk garments, carpets (handmade), craft articles, clothing and books.

Peking Opera: Immerse your group in some traditional Chinese theatre which combines music, vocal performance, mime, dance and acrobatics.

Peking Duck Banquet: A famous dish from Beijing and one that has been served since the Imperial era. Your students can enjoy this delicacy and get a real taste of China.

*We'll build your itinerary from scratch!
Simply choose your dates, then select your preferred visits and accommodation.*

Take a look at this popular option...



Inclusive Beijing guided tour package prices from...

Price (per person) includes: accommodation, return flights & airport transfers in resort, coach transportation throughout your tour, visits shown, services of an English-speaking guide & local guide throughout your tour, extensive group travel insurance & 1 in 10 free place ratio*

Accommodation	Board Basis	Days/Nights	LOW SEASON	MID SEASON	HIGH SEASON
			01 Sept 12 - 10 Mar 13 17 Apr 13 - 24 Jun 13	11 Mar 13 - 16 Apr 13 25 Jun 13 - 30 Jun 13 22 Aug 13 - 30 Sept 13	01 Jul 13 - 21 Aug 13
Rainbow Hotel	FB	6/4	£999	£1,033	£1,119
		8/6	£1,115	£1,164	£1,249

	MORNING	AFTERNOON	EVENING
Day 1		Overnight flight to Beijing	
Day 2		Early afternoon arrival in Beijing & escorted transfer to accommodation. En route visit to the Temple of Heaven	Evening meal Free time to settle in
Day 3	Morning visit to Tiananmen Square, Mao's Memorial Hall and Forbidden City	Afternoon tour and lecture at Gucoao Psychological Consultation Hospital	Evening meal
Day 4	Full day visit to Great Wall, Sacred Road and local Hutong family visit and Rickshaw tour		Evening meal
Day 5	Morning visit to Liiuminying agricultural village (with family visit) in the morning followed by 'Graduation' ceremony	Shopping in the flagship Friendship Store and neighbouring Silk Alley market	Evening meal
Day 6	Free time Transfer to airport for return flight to UK		

*Prices shown based on 30 paying passengers from a London airport & are subject to availability. Flight supplements may apply. Other departure airports are available. These guideline prices are based on the lowest prices available for each period. See pages 34-35 for terms & conditions.

Included in Your Itinerary Package

Your group will be accompanied by an **English-speaking National Guide** throughout your tour, with additional **Local Guides** at each location. You will be provided with useful information, assisted with entry into attractions and all your meals, and given general support as and when you need it.

In China, tipping is expected. **We include your tips for local staff** within your package price. That way, you won't need to carry cash or organise your tips every day.

Call us for further details on how NST will support you whilst you're away.

Flexible Flight Options

We offer flights from a variety of departure airports. For more information, see page 4.

Plus, when you book a coach transfer to take you home, upon landing at your UK airport you'll be met by an NST representative who'll escort you through immigration, baggage claim and customs, then take you to your waiting coach.



Tiananmen Square. Photographer: My Kaul

Accommodation

Popular Options in China

On our website you'll find details of our most popular accommodation options in China, including:

- Rainbow Hotel

New! Downloadable Accommodation Descriptions



To download full accommodation descriptions of your preferred choices, simply visit:
nstgroup.co.uk/psychology

This is only a sample of our entire range, so for expert advice that's tailored to your exact needs, speak to one of our Educational Travel Advisors today.



Booking Conditions

Please take the time to read the following conditions carefully. They are the basis for the contract between us and will assist you with your future plans.

1. CONTRACT

Your booking is with NST Travel Group Ltd, registered office: Discovery House, Brooklands Way, Whitehills Business Park, Blackpool FY4 5LW (company registration number 2665024). We are a member of ABTA with membership number V0550. ABTA and ABTA Members help holidaymakers to get the most from their travel and assist them when things do not go according to plan. We are obliged to maintain a high standard of service to you by ABTA's Code of Conduct. For further information about ABTA, the Code of Conduct and the arbitration scheme available to you if you have a complaint, contact ABTA, 30 Park Street, London, SE1 9EQ tel: 020 3117 0500 or www.abta.com.

A contract will only exist when we have received the required deposit and have acknowledged receipt of your completed form by the issue of our booking confirmation invoice. The person signing the booking form accepts the following conditions on behalf of all party members and will be our sole point of contact for correspondence. The contract between us is governed by the Law of England and Wales and any dispute will be dealt with under the exclusive jurisdiction of the Courts of England and Wales, except if you live in Scotland, when you may choose to have the contract governed by the laws of Scotland, and any dispute dealt with in the Scottish Courts.

2. DEPOSITS

Before a booking can be considered firm, the Party Leader must sign our booking form and forward the initial deposit for each paying member of the party as defined in Table A of the Important Notes. This deposit is not refundable, unless under the terms of our insurance cover. Please make cheques payable to NST Travel Group Ltd. For UK schools and groups, insurance cover is included and commences when the deposit payment is received. Insurance cover can be arranged for non-UK schools and groups at a supplement.

3. PAYMENT

We require a second deposit, as defined in Table A of the Important Notes section of this form, to be paid not more than 8 weeks after the due date of the initial deposit. The final balance must be settled no later than 10 weeks prior to departure or by return of post where receipt of invoice is within 10 weeks. If second deposits or final balances are not received by the due dates, this will be a breach of the contract between us, entitling us to treat the booking as cancelled by you. In these circumstances, the contract between us will remain in force until you receive our written advice and cancellation invoice.

4. CANCELLATION

In the event of cancellation by a paying member more than 10 weeks before your tour, the deposits may be transferred to a substitute member. However, if this is not possible, then the deposits will be retained by us. For cancellations made less than 10 weeks prior to your tour, the payments made may be transferred to a substitute member but we reserve the right to charge an amendment fee of £25, plus any direct costs incurred. For air tours, cancellation charges may apply in accordance with section 6 and the individual airline policy. However, if a transfer is not possible, please write to us immediately giving full details. The cancellation will be subject to the following charges:-

70-29 days before your tour: 60%
28-15 days before your tour: 80%
14 days or less before your tour: 100%

The date of effective cancellation is calculated on the day of receipt of written advice. If any cancellation brings the number of paying passengers below the minimum number required to qualify for a particular price, then the price will be adjusted accordingly. Please note that cancellation charges may be reclaimed, less an excess, via insurance, provided that the cancellation occurs within the terms of the policy e.g. necessary cancellation due to injury or illness of the party member or parent or parental redundancy, etc.

5. PRICE INFORMATION

The price of our tours is valid at the time of publication in our brochure or price list or on our website or when quoted to you. The prices were calculated on the basis of then known costs and the following exchange rates published in "The Financial Times" on November 16th 2011:

£1 = 1.5790 USA Dollars,
£1 = 1.1670 Euros,
£1 = 1.6136 Canadian Dollars,
£1 = 1.4475 Swiss Francs

Your trip may be subject to surcharges on currency, unforeseen increases in transportation costs and seaport charges, VAT, enforced increases in labour costs, aircraft fuel, overflying charges, airport charges and increases in scheduled air fares, in addition to any surcharges resulting from governmental action. In all cases where a surcharge is applicable we will absorb an amount equal to 2% of the tour price, excluding any insurance premiums and amendment fees. Only amounts in excess of 2% will be surcharged. If this means paying more than 10% of the tour price you will be entitled to cancel the tour with a full refund of all money paid (minus insurance premiums and any amendment fees incurred). Should you wish to cancel because of this, you must exercise your right to do so within 14 days from the issue date printed on the surcharge advice. You will be notified up to 30 days prior to departure if a surcharge is due on your tour.

6. ALTERATIONS & AMENDMENTS BY YOU

Should you wish to make any changes to your confirmed booking, you must notify us in writing as soon as possible. Where we can meet your request, a fee of £25 per amendment will be payable together with any costs incurred by ourselves and any costs or charges incurred or imposed by any of our suppliers in making the change.

Additions to your party are usually possible at any time up to 10 weeks prior to travel. However, you must always check with us first by telephoning 01253 833 833. If any addition is made within 10 weeks of departure we may charge an amendment fee of £25 per amendment. The ordering of extra services (for example vegetarian meals, changes to your itinerary or requests for booking visits) after 10 weeks prior to departure will also be subject to the payment of the amendment fee and the other costs / charges set out above. For tours by air it is the Party Leader's responsibility to ensure that all names are given in full and exactly as shown on the individuals' passports. This information is often required at an early stage of booking and some airlines may not permit name changes. Most however will treat name changes as cancellations and charge accordingly. We will pass these charges on to you. Once tickets have been issued or in the case of low cost carriers once names have been received, airlines will usually charge the full cost of the flight if a name is changed. If your final balance is overdue at the time of requesting this change this also must be paid in full before the change can be made.

7. IF WE ARE FORCED TO CHANGE THINGS

The arrangements in our brochure or price list or on our website or when quoted to you, were given in good faith. Occasionally we have to make changes and we reserve the right to do so at any time. Most changes will be minor and all will be advised at the earliest possible date. In the unlikely event of it proving necessary to alter significantly or cancel your tour, we will offer a suitable alternative if available or 100% refund (within 14 clear days) if we are not able, in our opinion, to offer an alternative that is sufficiently comparable. Significant changes include the following changes when made before departure: a change of accommodation to that of a lower official classification or standard for the whole or a major part of the time you are away, a change of accommodation to an alternative resort for the whole or a major part of the time you are away, a change of outward departure time or overall length of time you are away of 12 or more hours and, in the case of inclusive tours, a significant change of itinerary missing out one or more major destinations substantially or altogether. Please note a change of airport, airline or flight time of less than 12 hours are not significant changes unless otherwise expressly stated. Compensation will be paid as below, per full fare paying passenger, if we have to make a significant change to your tour within 10 weeks of commencement:-

70-29 days: £5 per person
28-15 days: £10 per person
14 days or less: £15 per person

Please note that the above options and compensation do not apply to study visits if the study visit you are due to take part in or attend is significantly changed or cancelled due to any reasons outside of our control. Please see Clause 7 of the Important Notes section for further details. Very rarely, we may be forced by 'force majeure' (see Clause 8) to change or terminate your tour after departure but before the scheduled end of your time away. This is extremely unlikely but if this situation does occur, we regret we will be unable to make any refunds (unless we obtain any refunds from our suppliers), pay you any compensation or meet any costs or expenses you incur as a result.

8. FORCE MAJEURE

Except where otherwise stated in these Booking Conditions, we regret we cannot accept liability or pay any compensation where the performance or prompt performance of our contractual obligations is prevented or affected by or you otherwise suffer any damage, loss or expense of any nature whatsoever as a result of 'force majeure'. In these Booking Conditions, 'force majeure' means any event which we or the supplier of the service(s) in question could not, even with all due care, foresee or avoid. Such events may include war or threat of war, riot, civil strife, actual or threatened terrorist activity, industrial dispute, natural or nuclear disaster, adverse weather conditions, fire and all similar events outside our control.

9. TRAVEL TICKETS & VOUCHERS

These are valid in conjunction with the particular travel arrangements booked and the route specified. No refund can be made for lost, mislaid, unused, unendorsed or expired tickets, coupons or vouchers. Any details given are provisional and do not commit any airline mentioned to providing a service.

10. LIABILITY

We will only accept responsibility for any personal illness, injury or death which results from the negligent (as the word is understood in English law) acts or omissions of any servant or agent, or any supplier working on our behalf in the provision of services or facilities to you and whilst acting within the scope of their employment. We will also accept responsibility for those elements of the tour arrangements which are under our direct control, and for the acts and/or omissions of our employees, agents, sub-contractors and suppliers. We can only be liable for the provision of special requests where we have confirmed their availability in writing beforehand. Please note, however, that we do not accept liability for any air or sea carriers whose individual conditions of carriage apply and are often subject to international agreements. We cannot be held responsible for the loss of enjoyment or additional expenses due to delays or changes in any travel arrangements or other services which are caused by circumstances amounting to 'force majeure' (see Clause 8). Our liability in all cases (except those involving illness, injury or death) is limited to 50% of the invoiced tour value per passenger in addition to a full refund. We cannot be held responsible for the failure or inability of any equipment or computer programme to recognise or correctly interpret or process any date as the true or correct date, or to continue to function correctly beyond that date. Should you or any member of your party have the misfortune to suffer illness, injury or death during the

period of your tour arising out of an activity which does not form part of the arrangements made by us, we shall, where appropriate, give you every help that we can by way of initial assistance, including initial legal costs associated therewith, up to a maximum value of £5,000 per booking form. You must request such assistance within 90 days from the date of the misadventure and in the event of there being a successful claim for costs against a third party or there being suitable insurance policies in force, the costs incurred by us shall be recoverable from you.

11. COMPLAINTS PROCEDURE

If there are any problems with your arrangements whilst you are away, the Party Leader must immediately inform the supplier of the service(s) in question. If the supplier is unable to resolve the complaint or problem to your satisfaction, you should contact us immediately either at the office during working hours or via our 24 hour duty officer out-of-hours. Most problems can be dealt with quickly. In the unlikely event that the matter remains unresolved, please write to us immediately on your return and we will do our utmost to find a satisfactory solution. Notice of any claim or dispute must be received by us within 28 days of the date on which the tour ended. If any dispute on a tour booked with NST Travel Group Limited cannot be amicably settled, it may be possible to refer it to arbitration under a special scheme arranged by the Institute of Arbitration in conjunction with the Association of British Travel Agents. This scheme provides for a simple and inexpensive method of arbitration on documents alone, with a restricted liability on a customer in respect of costs. The scheme does not apply to claims for an amount greater than £5,000 per person. There is also a limit of £25,000 per booking form. Neither does it apply to claims which are solely or mainly in respect of physical injury or illness or the consequences of such injury or illness, except for small compensation claims for minor injury or illness subject to a limit of £1,000 per person. Application for arbitration must be made within 9 months of return from the tour. Further details can be supplied by ABTA on request.

12. PERSONAL PROPERTY

Your personal property, including baggage, is your own responsibility at all times, unless any loss or damage is due to our negligence or failure to carry out our responsibility.

13. SUPERVISION

When you book with us, you accept full responsibility for any damage or loss caused by you or any member of your group. Full payment for any such damage or loss must be paid direct at the time to the accommodation owner or manager or other supplier. If you fail to do so, you will be responsible for meeting any claims subsequently made against us (together with our own and the other party's full legal costs) as a result of your or any member of your group's actions. Party Leaders and/or other adults accompanying the party agree to act 'in loco parentis' at all times and will adequately supervise all members of the party. It is the Party Leader's responsibility to ensure that:

- No group member under 18 consumes alcoholic beverages without prior written consent of the parent/guardian.
- No student smokes on coaches, in any accommodation, in any smoke-free places or behaves in any other way which may cause a fire hazard.
- All party members wear the seat belts provided for all journeys by coach. (Not always applicable to coaches sourced overseas).
- No student breaks a UK or local law.

14. TOURS BY AIR

In accordance with EU Directive (EC) No 2111/2005 Article 9, we are required to bring to your attention the existence of a "Community list" which contains details of air carriers that are subject to an operating ban within the EU Community. The Community list is available for inspection at www.ec.europa.eu/transport/air.

In accordance with EU Regulations we are required to advise you of the carrier(s) (or, if the carrier(s) is not known, the likely carrier(s)) that will operate your flight(s) at the time of booking. Where we are only able to inform you of the likely carrier(s) at the time of booking, we shall inform you of the identity of the actual carrier(s) as soon as we become aware of this. Any change to the operating carrier(s) after your booking has been confirmed will be notified to you as soon as possible. However, the UK departure airport, overseas arrival airport, carrier/airline and flight timings cannot be guaranteed (even when they have been confirmed in our Booking Confirmation Invoice). Nor can we guarantee the means of transport and timings for each leg of the journey but these will be as near as possible to those set out in our Booking Confirmation Invoice. We will provide transportation from your original departure point to the relevant airport if the original airport is changed.

The UK departure airport, overseas arrival airport, carrier and flight timings shown in this brochure, on our website or in any other promotional material and detailed on your Booking Confirmation Invoice are for guidance only and are subject to alteration and confirmation. The latest route, timings and carrier will be shown on your tickets which will be despatched to you approximately two weeks before departure. You must accordingly check your tickets very carefully immediately on receipt to ensure you have the correct route, flight times and carrier. It is possible that UK departure airport, overseas arrival airport, carrier and/or flight times may be changed even after tickets have been despatched - we will contact you as soon as possible if this occurs.

Any change in UK departure airport, overseas arrival airport, the identity of the carrier, flight timings, and/or aircraft type (if given) will not entitle you to cancel or change other arrangements without paying our normal charges except where specified in these conditions. If your flight is cancelled or delayed, your flight ticket

is downgraded or boarding is denied by your airline in circumstances which would entitle you to claim compensation and/or another remedy from the airline under EC Regulation No 261/2004 - the Denied Boarding Regulations 2004, you must pursue the airline for any compensation due to you. All sums you receive or are entitled to receive from the airline concerned by virtue of these Regulations represent the full amount of your entitlement to compensation or any other payment arising from such cancellation, delay, downgrading or denied boarding. This includes any disappointment, distress, inconvenience or effect on any other arrangements. The fact a delay may entitle you to cancel your flight does not automatically entitle you to cancel any other arrangements even where those arrangements have been made in conjunction with your flight. We have no liability to make any payment to you in relation to the Denied Boarding Regulations or in respect of any flight cancellation or delay, downgrading of any flight ticket or denial of any boarding as the full amount of your entitlement to any compensation or other payment (as dealt with above) is covered by the airline's obligations under the Denied Boarding Regulations. If, for any reason, you do not claim against the airline and make a claim for compensation or any other sum from us, you must, at the time of payment of any compensation or other sum to you, make a complete assignment to us of the rights you have against the airline in relation to the claim that gives rise to that compensation payment. If your airline does not comply with these rules you should complain to the Air Transport Users' Council on 020 7240 6061 or via their website at www.auc.org.uk.

15. CONDITIONS OF SUPPLIERS

Many of the services which make up your tour are provided by independent suppliers. Those suppliers provide these services in accordance with their own terms and conditions. Some of these terms and conditions may limit or exclude the supplier's liability to you, usually in accordance with applicable International Conventions. Copies of the relevant parts of these terms and conditions are available on request from ourselves or the supplier concerned.

16. PASSPORTS & VISAS

The passport and visa requirements applicable at the time of printing to British Citizens for the arrangements we offer are shown in the Important Notes section of this form. It is the responsibility of the Group Organiser to obtain the passport and ensure all group members not included on any collective passport have a full individual passport.

For travel to or via the United States all passengers, including children must have their own machine-readable passport. Most British Citizens holding a British passport can travel under the Visa Waiver Program but there are some restrictions and the Group Organiser must check these by looking at the US Embassy website at www.usembassy.org.uk. All persons travelling to the USA under the Visa Waiver Program must have obtained travel authorisation using the Electronic System for Travel Authorisation (ESTA). You must have obtained authorisation at least 72 hours before departure. This requirement is in addition to the submission of passport information, which is still required. Each individual traveller must register online on the following website: <https://esta.cbp.dhs.gov/esta>.

A charge will be made for travel authorisation and this cost will be in addition to the tour price and payable by each passenger.

Party Leaders may wish to refer to the Department of Health leaflet 17.2 'Health Advice for Travellers' which offers health information for all destinations. Copies are available from Post Offices nationwide. Although NST's extensive insurance covers the cost of emergency medical treatment abroad, we would still recommend that all party members travelling within the EU have a valid EHC (formerly E111). At present there are no mandatory health formalities for British Citizens for the destinations we offer but please bear in mind that requirements may change and you must check the up to date position in good time before departure. Further information can be obtained from the Department of Health website at www.dh.gov.uk/travellers or from www.fiftotravel.scot.nhs.uk. It is the Group Organiser's responsibility to ensure that all group members are in possession of all necessary travel and health documents before departure. Except as set out above and in our Important Notes section, all costs incurred in obtaining such documentation must be paid by you. We regret we cannot accept any liability if you are refused entry onto any transport or into any country due to failure on your part to carry correct documentation or provide personal data on a timely basis for all party members that are required for border control or aviation security purposes. If any member of your group is not a British Citizen or holds a non-British passport, you must check passport and visa requirements with the Embassy or Consulate of the country(ies) to or through which you are intending to travel. If failure to have any necessary travel or other documents results in fines, surcharges or other financial penalty being imposed on us or any of our suppliers, you will be responsible for reimbursing us accordingly.

17. DELAYS AT PORT, INTERNATIONAL RAIL TERMINAL OR AIRPORT

In the event of a delay at the port, international rail terminal or airport of departure, we will ensure that you are informed of the reasons for and the extent of the delay as early as possible. Except for delays to flights, in the event of a delay in any travel arrangements included in your tour lasting less than 12 hours, we will either (1) make arrangements there and then as appropriate to reduce any discomfort (for example providing you with a meal voucher) or (2) we will provide retrospective reimbursement of reasonable costs you incur for refreshments on production of receipts. In both cases if the delay causes you to miss a pre-booked meal where the delay exceeds 3 hours, your group will be entitled to light refreshments. In

Booking Conditions & Important Notes

the event of a delay exceeding 6 hours, your group will be entitled to receive a main meal.

In the event of a delay to flights the responsibility to provide assistance lies with the airline concerned. Please see Clause 15 for further details.

The length of any delay is calculated from the scheduled departure time of the sea vessel, train or flight for which the group has a firm booking.

18. SPECIAL REQUESTS

Any special requests must be clearly notified to us in writing. We do our best to meet any special requests made by you and ensure that these are forwarded to the appropriate persons. We cannot guarantee, however, that special requests will be fulfilled and failure to do so does not constitute a breach of contract. Special requests will only be held to form part of the contract between you and NST when they have been confirmed in writing to be guaranteed by NST.

19. MEDICAL PROBLEMS

If any member of your group has any medical problem or disability which may affect your arrangements, the Group Organiser must give us full details before you confirm your booking so that we can advise as to the suitability of the chosen arrangements. The Group Organiser must give us full details in writing at the time of booking (if not already confirmed in writing) and promptly update us of any changes. If we reasonably feel unable to properly accommodate the particular needs of the person concerned, we must reserve the right to decline their reservation or, if full details are not given at the time of booking, cancel when we become aware of these details.

20. ADDITIONAL NEEDS

If any member of your group has any additional needs, please request a copy of our Additional Needs Guidance Notes.

21. DATA PROTECTION

We have measures in place to protect the personal booking information held by us. The contact details supplied, including postal address, telephone and email address, will only be used to fulfil tour administration and to communicate details of NST's and our associated companies products and services. The personal information supplied about party members will only be used to allow our employees, agents, subcontractors and suppliers to provide the promised service to our normal high standards. It may also be provided to public authorities such as customs or immigration if required by them, or as required by law.

Important Notes

1. PAYMENT – TABLE A

The following deposits are payable for each paying member of the group according to the type of tour and basic tour cost:

Type of Tour	1 st Deposit on booking	2 nd Deposit 8 weeks after booking
Coach / rail / Eurostar tours within Europe (under £90)	£30	-
Coach / rail / Eurostar tours within Europe (between £91-£139)	£30	£30
Coach / rail / Eurostar tours within Europe (between £140-£199)	£30	£60
Coach / rail / Eurostar tours within Europe (£200 or more)	£30	£80
*Air tours within Europe	£60	£60
*Air tours to Russia and outside Europe	£80	£80

*Where a low-cost airline is chosen as part of your arrangements, a larger deposit may be required to cover the full air fare cost. Any increased amount will be specified in our offer terms. The final statement of account will be sent to you 12 weeks before departure. The balance of the cost of your arrangements must be received by us not less than 10 weeks prior to departure.

2. ITEMS INCLUDED IN THE PRICE OF YOUR TOUR

- Accommodation as described in our provisional booking letter to you (see clause 5 Accommodation).
- Meals as indicated in our provisional booking letter to you (see clause 6 Meals).
- Air or coach travel as specified including all security charges and taxes but excluding departure taxes only payable locally.
- UK air passenger duty on air tours.
- All foreign air taxes that can be prepaid.
- Transfers from arrival airport to accommodation and return.
- Excursion arrangements as outlined in our provisional booking letter to you (see clause 7 Excursions).
- Insurance cover (see clause 8 Insurance).
- Generous free supervisory places. Please refer to our brochure or offer letter.
- VAT at current rates where applicable.
- Concessions as detailed in clause 13.

3. NOT INCLUDED IN THE PRICE OF YOUR TOUR

- Meals en route, unless specifically stated.
- Entrance fees, boat trips, guides etc unless specifically stated.
- Drinks with meals, other than breakfast.
- The cost of a full passport / collective passport, as required by the country to be visited (see clause 10 Passports).

- The cost of visas and immigration taxes. See clause 11 Visas.
- Departure taxes which can only be paid locally.
- Transfers for excursions unless specifically included.
- Gratuities or gifts for guides etc unless specifically included.
- Music instrument insurance (Music tours only)
- Production of concert programmes (Music tours only)

4. GROUP SIZE

The minimum number for which we quote tour prices is indicated on the price pages for each country/region, or in our provisional booking letter to you. We can quote prices for smaller groups.

5. ACCOMMODATION

We are very proud of the accommodation we provide for our groups, having built up a detailed understanding of the requirements of school groups. We have carefully selected accommodation with these requirements in mind, through close working partnerships with hoteliers, accommodation providers and our agents. We describe in our brochures either specific accommodation which is frequently used, or the standards and category of accommodation used. Additional hotels and centres not named in the brochure but of a similar standard may also be offered. In all cases, accurate and honest NST accommodation descriptions are provided.

Adults on free places: are generally accommodated in twin bedded rooms (with the exception of some youth hostels and youth centres where multi bedded rooms may be provided, please refer to the specific accommodation room breakdown for details). Subject to availability, single rooms are provided free of charge if the male/female composition of the accompanying staff makes them absolutely necessary (with the exception of long haul destinations: USA, Canada, Iceland, Mexico, Egypt, India and China). All single room preference requests incur a supplement, which is detailed in our provisional booking offer letter.

Additional paying adults: will generally be accommodated in twin bedded rooms and pay a per night supplement (minimum £5 per night added to the basic student tour price, (with the exception of long haul destinations and some European cities - please refer to your quotation or provisional booking letter for precise details)). Subject to availability, single rooms are provided free of charge if the male/female composition of the accompanying staff makes them absolutely necessary (with the exception of long haul destinations: USA, Canada, Iceland, Mexico, Egypt, India and China). All single room preference requests incur a supplement, which is detailed in our provisional booking offer letter.

The total number of adults must not exceed 20% of the group size or additional charges may apply to the whole group.

Important note: in certain USA hotels, some students may be required to share double/king beds, this will be advised and agreed at time of booking. This is clearly stated in the accommodation description. In all youth centres and hostels the students are accommodated in single or bunk beds.

6. MEALS

The standard meal basis of tours is quoted in our provisional booking letter to you. Extra meals can be booked where required. Where full board is indicated a packed lunch is normally provided. Many establishments will charge extra for a hot lunch. Not all establishments can provide hot lunches.

7. EXCURSIONS

The provision of excursions varies from tour to tour. All excursions and services organised by us on your behalf and included in the price of your arrangements will be detailed in your itinerary.

a. DESTINATION INFORMATION

Specially prepared information is available for our most popular destinations. This gives a comprehensive summary of all the visits available to groups and provides additional general information.

b. NON STANDARD VISITS

Most visits requested can be booked by NST. Should a large amount of research be required for non-standard visits, we reserve the right to levy an additional charge. You will be notified of the amount required prior to the visits being researched. Where we agree to organise study visits on your behalf which are dependent on the goodwill of organisations or individuals, we are unable to guarantee these arrangements. As these providers are not our suppliers and we do not have contracts with them for the supply of these services, they may choose to withdraw any offered facilities at any time and this is outside our control. In these circumstances we reserve the right to substitute alternative arrangements to those originally requested. Any such change will not be a significant change or cancellation for the purposes of clause 7 of our Booking Conditions.

c. PREPAID THEATRE VISITS

Please note that prepaid theatre tickets are non-refundable.

d. CONCERTS (MUSIC TOURS ONLY)

All concerts organised by us on your behalf and included in the price of your arrangements will be detailed in your itinerary.

Where we agree to organise and publicise concerts on your behalf we cannot guarantee concert arrangements requested for particular venues or on particular dates. This is because we are dependent on the goodwill of the individuals that agree to provide facilities for these concerts. Because these providers are not our suppliers and we do not have contracts with them for the supply of their services, they may choose to withdraw any offered facilities at any time and this is outside our control. In these circumstances we reserve the right to substitute alternative concert arrangements to those requested. For

concert groups concerts may be organised outdoors and in the event of bad weather these concerts may have to be cancelled. In this event we will supply you with ideas for alternative activities or excursions.

e. EXCHANGE PROGRAMME TOURS

We have no control over the organisation or operation of any of the French schools in our, 'French Exchange with No Home Stays Programme'. We only undertake as part of our contract with you to arrange for your school to link up with the French school. The French school may change their plans or cancel before or after your departure due to reasons that are outside our control, for example bad weather, teacher illness or other unforeseen circumstances. If the exchange part of your programme is significantly changed or cancelled due to any reasons outside of our control you will not be entitled to change or cancel your arrangements with us without paying our normal charges. Furthermore, the options or compensation set out in our Booking Conditions will not be available to you. We will however endeavour to help you find another similar school or an event for your group to take part in or attend. If these arrangements are more expensive you will be responsible for paying the increased cost.

f. ADVICE FOR EXCURSIONS AND VISITS

As described in our brochure, we operate a Safety Management System which is consistent with industry best practice and is externally audited every year by a suitably qualified independent organisation. Whilst it is not practical to inspect all visits and excursions, we will use reasonable endeavours to evaluate the level of risk to our groups and, where appropriate, bring to the attention of our group leaders any advice that we consider is necessary to help them make informed decisions and manage their own responsibilities for the safety of their group. Additionally, the DfE, Local Authorities and, in some cases individual schools issue guidance on all aspects of school trips and outside activities including planning, risk assessment, organisation and supervision. If you are in any doubt, you can and should always seek specific advice in advance from your employer, Local Authority or the DfE.

8. INSURANCE

INSURANCE SUMMARY (Non-UK Tours)

NST Travel Group Limited act as an appointed representative for Fogg Travel Insurance Services Limited. The following insurance cover is provided for every tour participant and is included in the tour price. Full details of cover will be sent to Group Organisers. Please note that insurance cover is put in place on the day we confirm your booking.

- Cancellation and Curtailment: Up to £5,000
- Personal Possessions: Up to £1,500 (single article limit up to £250, valuables up to £250, passport/delayed possessions up to £100)
- Personal Money: Each participant up to £200, money held by leaders £500, emergency funds £500
- Emergency Medical Expenses: Up to £5,000,000 (Nil in the UK)
- Personal Liability: Up to £1,000,000
- Organiser's Liability: Up to £5,000,000
- Personal Accident: Up to £25,000 (lower limit for under 16s, no cover for 75s and over)
- Legal Advice and Expenses: Up to £25,000
- Delayed Departure: Up to £100
- Abandonment: Up to £5,000
- Additional Travel Expenses: Up to £100
- Missed Departure or Connection: Up to £500

BASIC INSURANCE SUMMARY (UK Tours)

The insurance cover automatically included in your UK tour is as follows:

- Cancellation and Curtailment: Up to £5,000 or in the event of curtailment, the appropriate proportion of the tour costs.
- Personal Liability: Up to £1,000,000
- Organiser's Liability: Up to £5,000,000
- Legal Expenses: Up to £25,000

Please note there are excesses for some sections of cover. You can view a full copy of our insurance policy and key facts documents on our website which highlights benefits and cover provided. If you do not have access to a computer, please phone us and we will forward a copy of the documents to you prior to booking. Please note, it is important that all members of your party have details of the insurance policy prior to booking.

9. SEAT BELTS ON COACHES

All UK coaches will be fitted with seat belts. In the event of a breakdown any replacement coach from the UK will be fitted with seat belts. However, due to different legislation in countries outside the UK, this may not be possible if a non-UK coach is supplied.

10. PASSPORTS

NST recommend that groups do not use a collective passport. Collective passports (available to British nationals only) for persons under the age of 18 are not accepted by all countries or airlines. It is the Group Organiser's responsibility to check whether collective passports are acceptable. The Group Organiser will be responsible for obtaining a collective passport. Please note that British Citizens not on the collective passport must hold a full 10 year British passport. Identity cards are also necessary in many countries for students travelling on a collective passport. If a student is aged 16 or over and hasn't yet got a passport, our recommendation is that you should apply for one at least 10 weeks prior to departure, longer if a visa is required. Further information can be obtained from the UK Passport Service Advice line on 0870 521 0410 or website at www.passport.gov.uk.

11. VISAS

Non-British Citizens may require visas/transit visas, for which the individual is responsible and must apply for themselves. The cost of the visa is not included in tour prices. NST will provide the necessary advice to enable

groups to obtain visas. We recommend that all visa requirements are completed at least 2 months prior to departure. Please note that we cannot accept liability if you or any member of your group is refused a visa through no fault of ours. The inability to travel due to incomplete visa requirements is not covered by insurance. Remember, visa requirements may change and you must check the up to date position in good time before departure.

12. INSPECTION/PREVIEW VISITS*

In order to provide further peace of mind for your school visit, we offer 2 nights bed and breakfast accommodation for 2 people in a twin room free of charge at, or near to, your booked accommodation. This enables you to plan your visit and answer any queries on your own risk assessments. Please contact us for further details and eligibility.

13. CONCESSIONS

To ensure adequate supervision, NST offers generous free places for staff accompanying a group. Please refer to our brochure or offer letter for further details. The following further concessions are available to groups of minimum 30 full paying persons. Persons travelling on these places do not count towards the free place allocation. Concessions apply to the basic tour prices only and not to any additional services i.e. paid excursions, supplements, entrance fees or theatre visits.

Infants Under 2 – price on application.
Children 2–18 – 50% of basic student tour price.
Spouse – 50% of basic student tour price.
AIR TOURS: 1 child or spouse concession permitted.
COACH TOURS: 2 child concessions and 1 spouse concession permitted.
Children and infants must share a room with their parent(s).
Concessions are not available on tours to China, Egypt, Iceland, India, Mexico, Russia or USA.

14. NOISE

It should be remembered that in many cities and towns accommodation may be situated in a busy area and therefore some noise is likely. Please bear this in mind when choosing your accommodation.

15. FOREIGN OFFICE ADVICE

Occasionally, the Foreign and Commonwealth Office finds it necessary to issue advice on the suitability of travel to certain destinations. Such advice can be found on the Foreign and Commonwealth Office's website at www.fco.gov.uk/knowbeforeyougo.

16. PUBLICATION DATE

These Booking Conditions and Important Notes were published in December 2011.

Prices, Information, Accuracy, Terms & Conditions

Prices shown in this brochure are valid until July 2012 and may be subject to change after this date. All prices and information shown in this brochure are subject to availability, can be withdrawn at any time without notice and are correct at time of going to print (March 2012). Whilst every effort is made to ensure the accuracy of information and prices at time of printing, regrettably errors and changes do occasionally occur. You must therefore ensure you check all details of your chosen arrangement including the price, with us at the time of booking. Entrance fees for some visits may be payable locally. Public transport charges are not included in the prices shown and must be paid locally. In some instances a booking fee may apply to services provided by NST.

Flight tours: Flight supplements may apply. The air holidays & flights shown are ATOL Protected by the Civil Aviation Authority. ATOL 3606.

Coach tours: Zone A - Beds, Berks, Bucks, East & West Sussex, Essex, Gtr London, Herts, Kent & Surrey. Zone B - Camb, Hants, Norfolk, Northants, Oxon, Suffolk, Warks, West Midlands, Wilts. Zone C - Derbyshire, Dorset, Gloucestershire, Herefordshire, Leicestershire, Lincs, Notts, Shropshire, Staffordshire, Worcestershire. Zone D - Cheshire, Cumbria, Devon, Lancashire, North Lincs, Somerset, Wirral, Yorkshire. Zone E - Cornwall, County Durham, Gwynedd, Flintshire, Monmouthshire, Northumberland, Pembrokeshire, Powys.

Early Booking Discount: £20 discount per paying person for long haul travel and £10 discount per paying person for European tours. Offer applicable for bookings made before 31/05/2012. To qualify for the saving all departures must be between 1st September 2012 and 30th September 2013 - a minimum stay of 1 night is required. Early booking discount is not applicable for travel to UK destinations, day trips, transport only and transport and accommodation only packages.

Large Group Discount: Only applicable to coach tours with a minimum of 42 paying passengers and air tours with a minimum of 40 paying passengers. Excludes tours to UK destinations; Music tours; or tours staying at the Château d'Eblinghem, St Omer.

Loyalty Reward: Loyalty Reward - tour discount of £5 per paying person for UK, European & long haul travel. Offer is available in the first consecutive year of travel onwards to the school or college taking the same subject based tour. A minimum stay of 3 nights is required for long haul travel and 1 night for UK & European travel.

nst the **experience** shows

No-one Goes Further to Bring Education to Life



Call 0845 293 7975
Email info@nstgroup.co.uk Visit nstgroup.co.uk



NST, Discovery House, Brooklands Way,
Whitehills Business Park,
Blackpool, Lancashire, FY4 5LW

